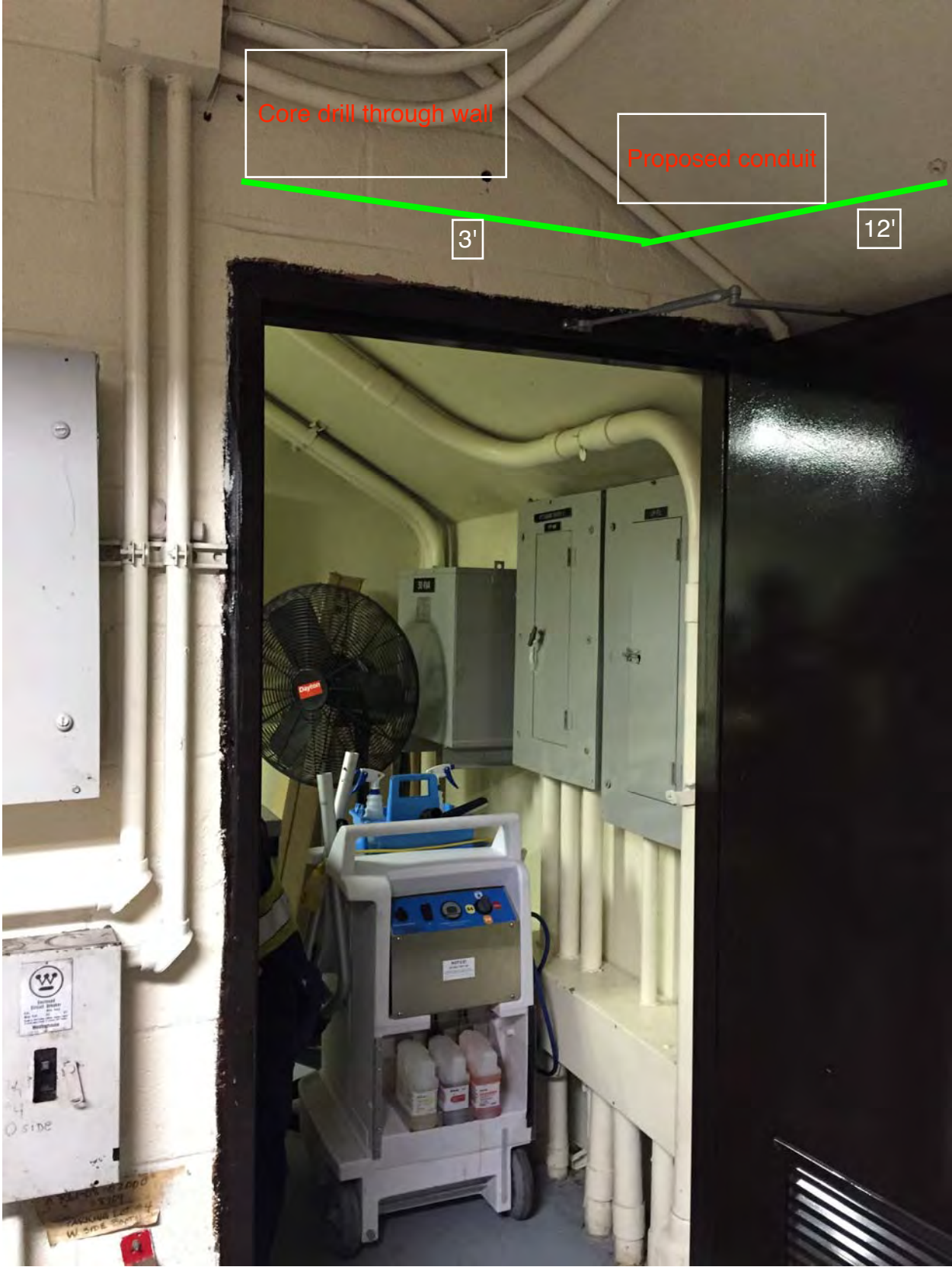


Photo #5: Proposed conduit route



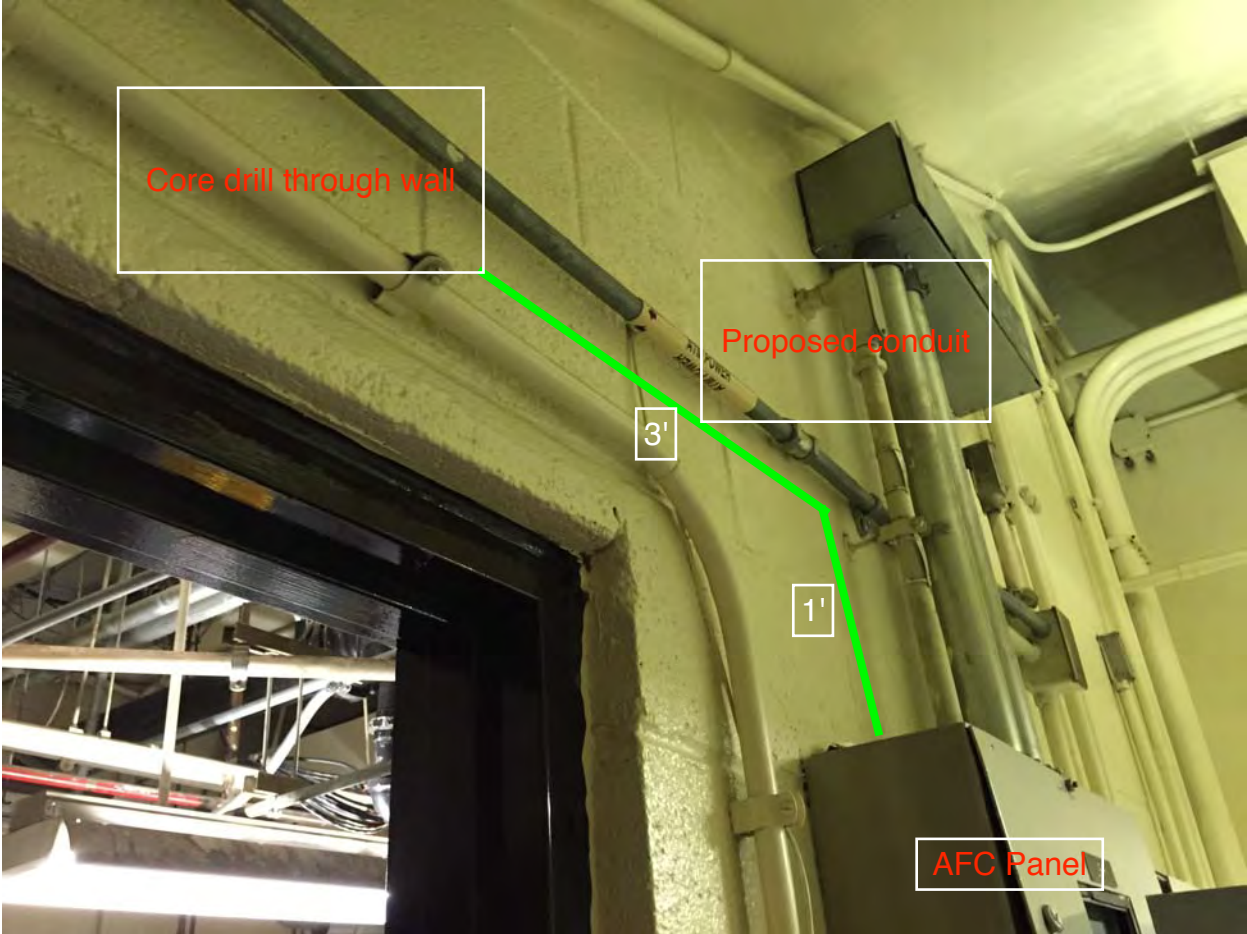
Core drill through wall

Proposed conduit

3'

12'

Photo #6: Proposed conduit route



EXISTING LAYOUT

new schematic drawing/proposed pathway on last page

SERVICE ROOMS

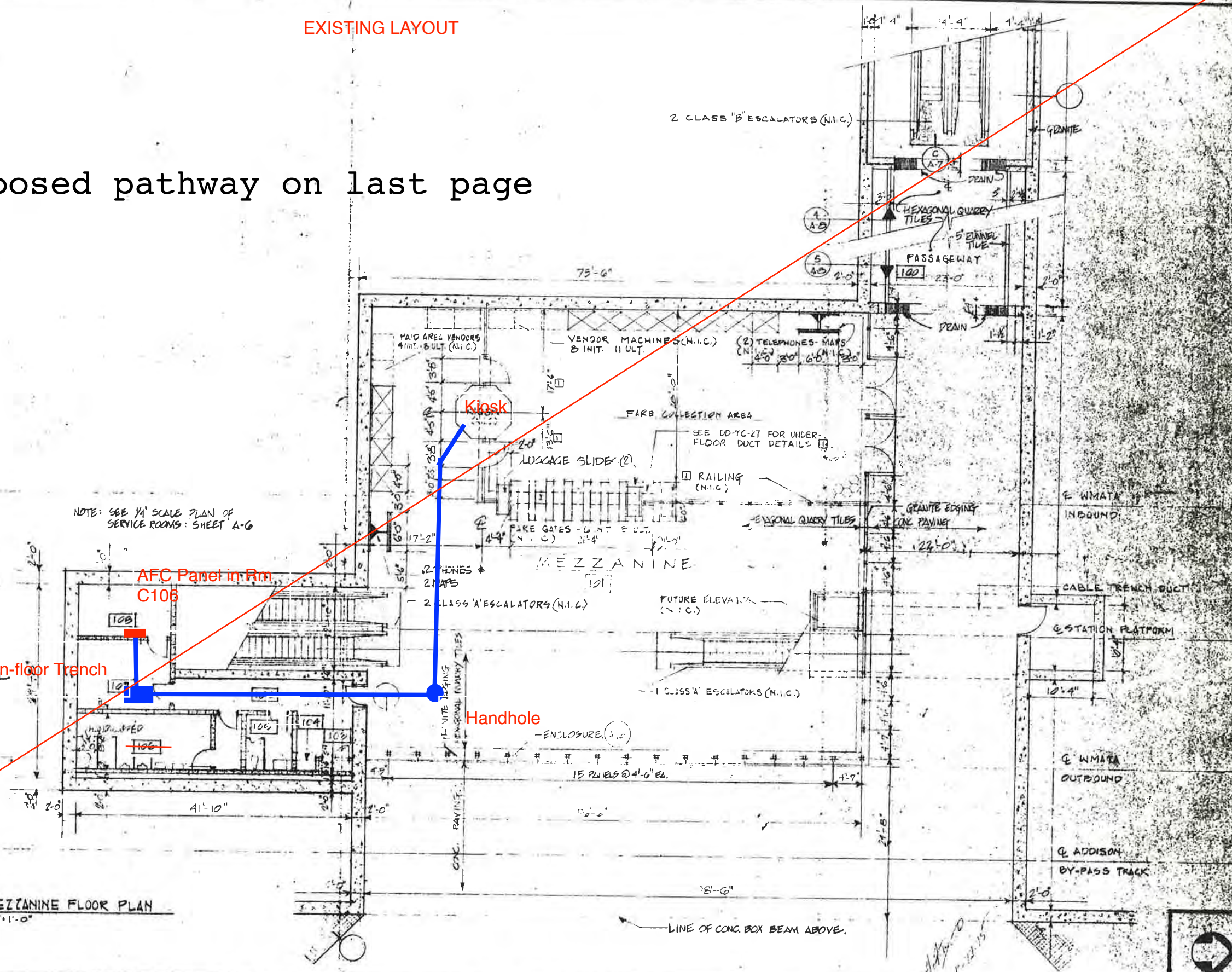
- 102 CORRIDOR
- 103 FIRE EQUIPMENT ROOM
- 104 BELL SYSTEM ROOM
- 105 WOMEN'S WASHROOM
- 106 MEN'S WASHROOM AND BUS DRIVERS WASHROOM
- 107 WATER SERVICE, CLEANERS AND MECHANICAL EQUIPMENT ROOM
- 108 ELECTRICAL ROOM

MEZZANINE FLOOR PLAN
1/8" = 1'-0"

In-floor Trench

AFC Panel in Rm. C108

Handhole



NO	DATE	NUMBER	REFERENCE DRAWINGS	DESCRIPTION	DATE	BY	REVISIONS
RMR	5/1/74	100-727	USE OF UNDERFLOOR DUCT UNDER FARE COLLECTION CONSOLES.				
JL	5/1/74			CORRECT 28'-0" DIMENSION FROM WALL TO FARE GATES. ADD DIMENSIONING TO UNDERFLOOR DUCT NOTE.	1/17/74		
Jal	5/1/74						

WASHINGTON METROPOLITAN AREA TRANSIT AUTHORITY

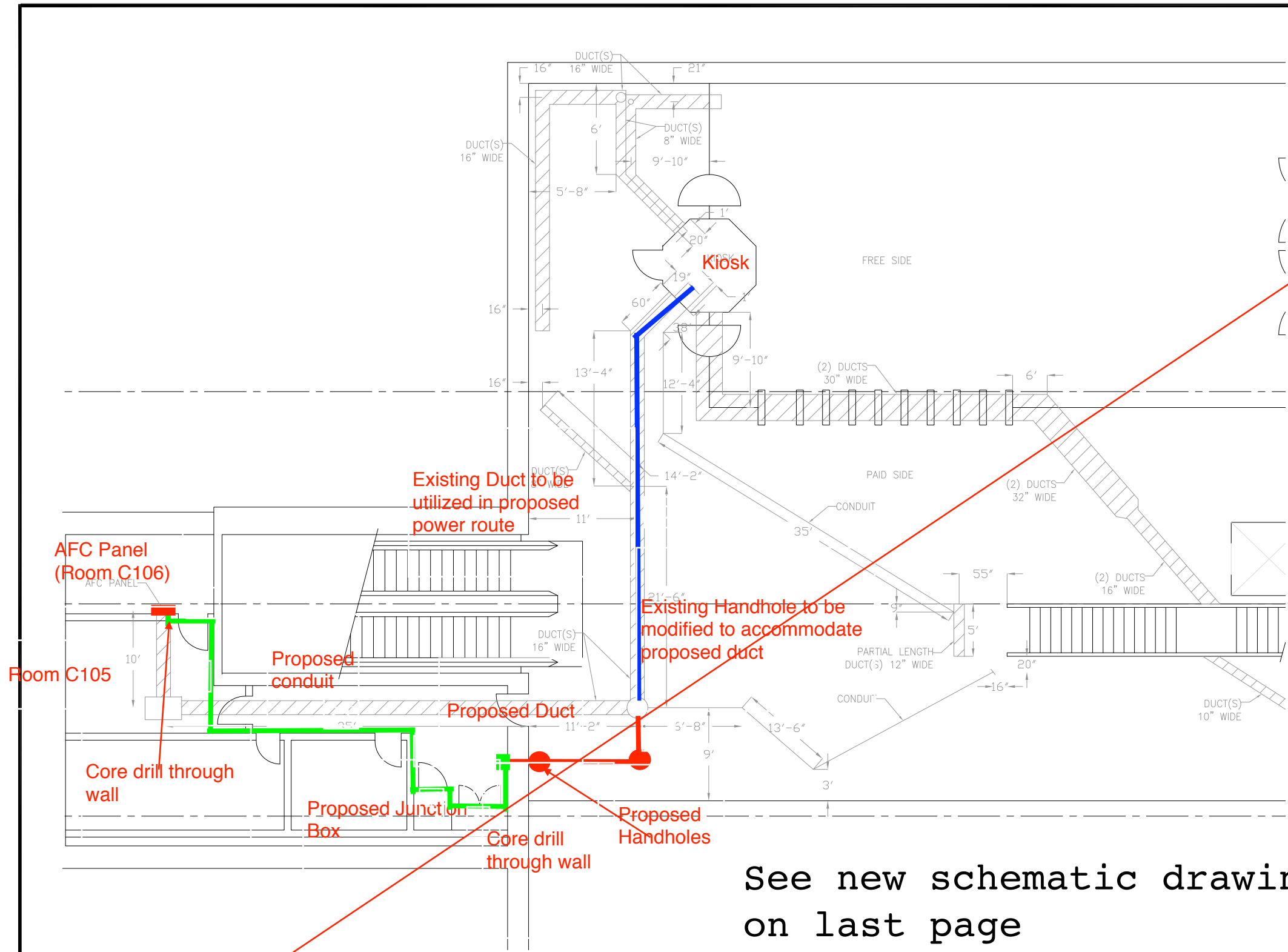
APPROVED *Ernie Thayer* 6/12/74
 WMATA
 APPROVED *[Signature]*

JE LEWIS, CALLER & COMPANY
 GENERAL ENGINEERING CONSULTANT
 HARRY WEBB & ASSOCIATES
 ARCHITECTURAL CONSULTANT
 APPROVED *[Signature]* 6/2/74

NEW CARROLLTON STATION - MEZZANINE
 FARE MACHINES, PHONES, MATS

SCALE: 1/8" = 1'-0"
 DRAWING NO: SK-987

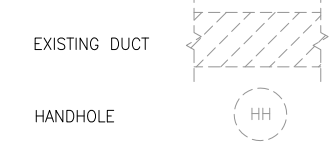
^ (68)



PLAN NOTES:

1. DIMENSIONS ARE IN FEET AND INCHES.
2. DIMENSIONS ARE FOR REFERENCE ONLY.
3. EXISTING IN-FLOOR DUCTS/CONDUITS WERE IDENTIFIED USING A PORTABLE GPR SCANNING DEVICE.
4. THE SCANNING COVERAGE IS LIMITED TO THE MEZZANINE FLOOR ONLY.
5. GPR SCANNING HAS THE FOLLOWING LIMITATIONS: (i) 12 INCHES VISIBLE SCANNING DEPTH; (ii) VISIBILITY BEYOND CONGESTED OR NEAR SURFACE REINFORCEMENT LAYERS; (iii) DETECTION OF PVC AND OTHER NON-METALLIC OBJECTS (iv) DETERMINATION OF SIZE AND EXTENTS OF SUBSURFACE ANOMALIES SUCH AS SLAB VOIDS OR REBAR SIZES; AND (v) VISIBILITY WHEN VARIABLE MOISTURE CONDITIONS EXIST IN THE SUBSTRATE.

LEGEND:



See new schematic drawing/proposed pathway on last page

NEW CARROLLTON STATION
SCALE: NOT TO SCALE

CONTRACT NO.
XXXXXX

DESIGNED	C. LOOSE	11-14	DATE	11-14	NUMBER	DESCRIPTION	DATE	BY	DESCRIPTION
DRAWN	C. LOOSE	11-14	DATE	11-14					
CHECKED	M. BUTLER	11-14	DATE	11-14					
APPROVED			DATE						

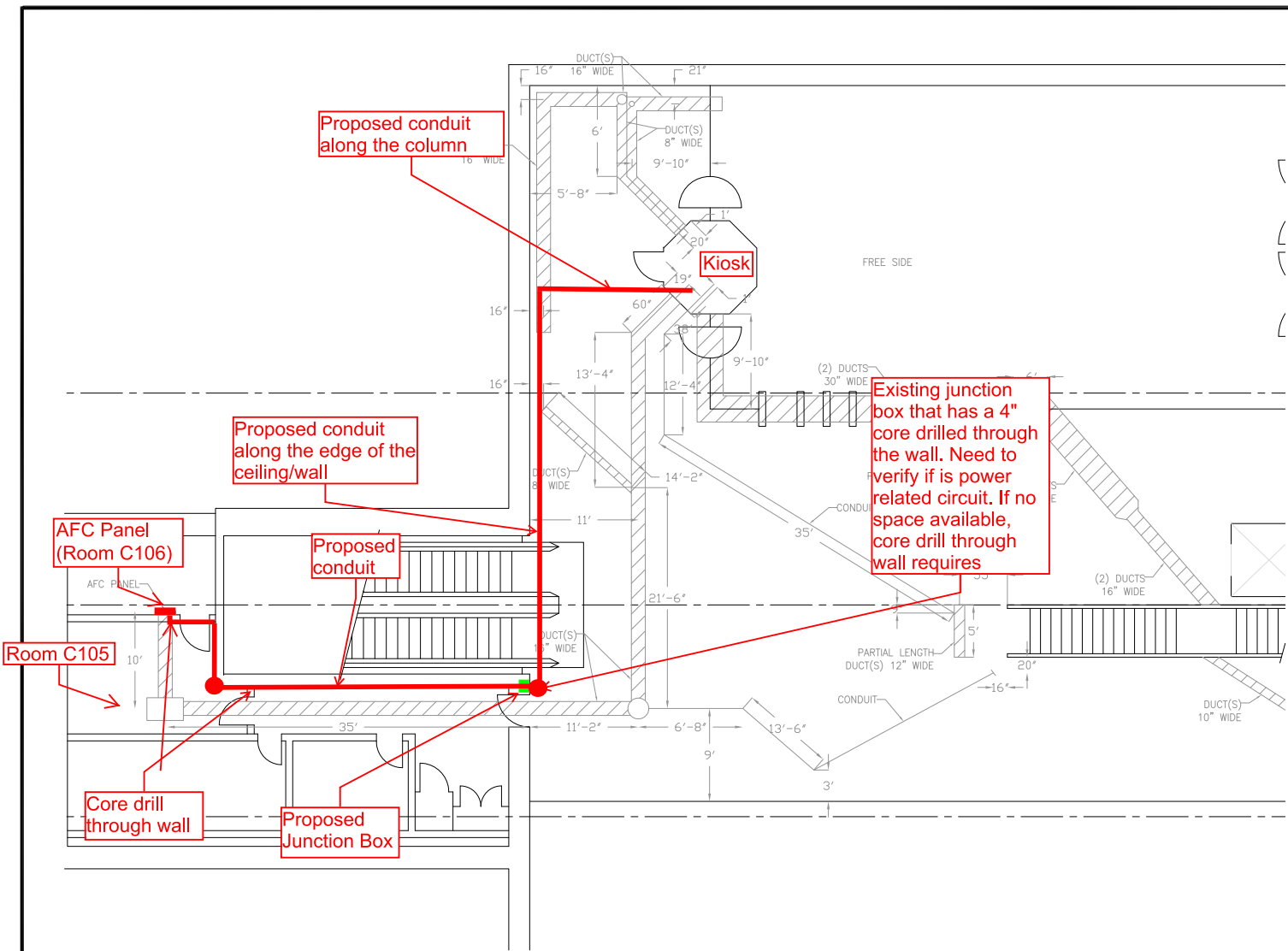
WASHINGTON METROPOLITAN AREA TRANSIT AUTHORITY
DEPARTMENT OF TRANSIT INFRASTRUCTURE AND ENGINEERING SERVICES
OFFICE OF INFRASTRUCTURE RENEWAL PROGRAM

GFP A Gannett Fleming/Parsons JOINT VENTURE

APPROVED _____ SUBMITTED _____
PROJECT MANAGER

15-NEPP-01
IN - FLOOR DUCT INSPECTIONS
D13 New Carrollton
PROPOSED POWER ROUTE

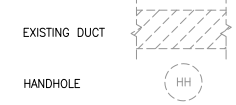
SCALE NOT TO SCALE DRAWING NO. D13-E-100 XXX



PLAN NOTES:

1. DIMENSIONS ARE IN FEET AND INCHES.
2. DIMENSIONS ARE FOR REFERENCE ONLY.
3. EXISTING IN-FLOOR DUCTS/CONDUITS WERE IDENTIFIED USING A PORTABLE GPR SCANNING DEVICE.
4. THE SCANNING COVERAGE IS LIMITED TO THE MEZZANINE FLOOR ONLY.
5. GPR SCANNING HAS THE FOLLOWING LIMITATIONS: (i) 12 INCHES VISIBLE SCANNING DEPTH; (ii) VISIBILITY BEYOND CONGESTED OR NEAR SURFACE REINFORCEMENT LAYERS; (iii) DETECTION OF PVC AND OTHER NON-METALLIC OBJECTS (iv) DETERMINATION OF SIZE AND EXTENTS OF SUBSURFACE ANOMALIES SUCH AS SLAB VOIDS OR REBAR SIZES; AND (v) VISIBILITY WHEN VARIABLE MOISTURE CONDITIONS EXIST IN THE SUBSTRATE.

LEGEND:



NEW CARROLLTON STATION
SCALE: NOT TO SCALE

CONTRACT NO.
XXXXXX

DESIGNED	C. LOOSE	11-14	REFERENCE DRAWINGS		REVISIONS		
			NUMBER	DESCRIPTION	DATE	BY	DESCRIPTION
DRAWN	C. LOOSE	11-14					
CHECKED	M. BUTLER	11-14					
APPROVED							

WASHINGTON METROPOLITAN AREA TRANSIT AUTHORITY
DEPARTMENT OF TRANSIT INFRASTRUCTURE AND ENGINEERING SERVICES
OFFICE OF INFRASTRUCTURE RENEWAL PROGRAM

GFP A Gannett Fleming/Parsons JOINT VENTURE

APPROVED _____ SUBMITTED _____ PROJECT MANAGER

15-NEPP-01
IN - FLOOR DUCT INSPECTIONS
D13 New Carrollton
PROPOSED POWER ROUTE

SCALE: NOT TO SCALE DRAWING NO. D13-E-100 XXX